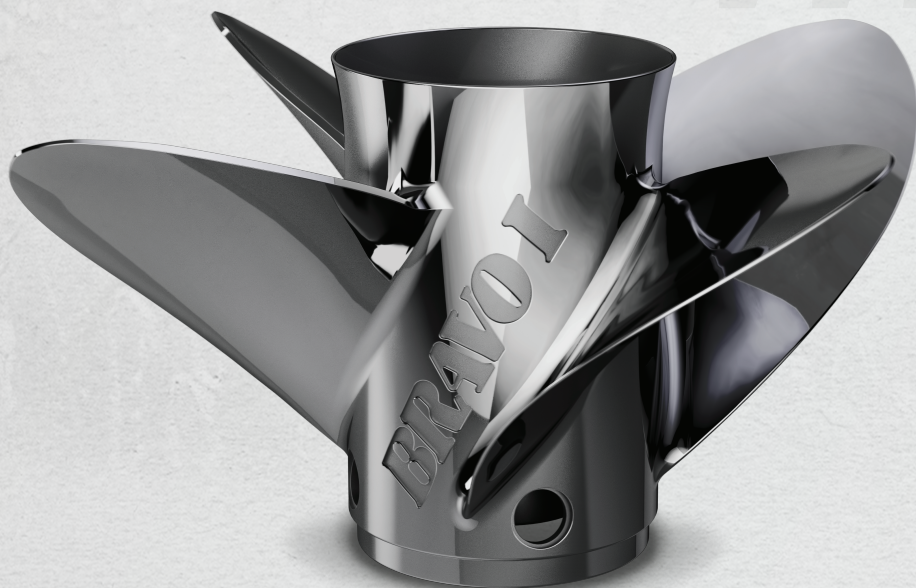




# WIDE OPEN



PRO FINISH

## BRAVO I<sup>®</sup> LT

When it comes to propellers, “performance” is often measured by top speed alone. In reality, great all-around performance also requires outstanding hole shot, on-plane efficiency and fuel economy under a load. The Pro Finish Bravo I<sup>®</sup> LT outboard propeller covers all the performance bases and significantly optimizes ride quality. The flared exhaust tube lifts the stern. This brings the bow down for a more level ride. The result is improved handling and a dryer, more comfortable boating experience. Counter-rotation models expand the Bravo I<sup>®</sup> LT application from right-hand rotation, single engine outboard bay boats and multi-species hulls to multi-engine outboard center consoles.

- Handcrafted by Mercury Racing propeller artisans
- High luster Pro Finish for enhanced durability and corrosion resistance
- Patented Mercury<sup>®</sup> Performance Vent System<sup>®</sup> (PVS<sup>®</sup>) enables operators to dial in their propeller for peak planing performance

A majority of Mercury Verado<sup>®</sup> and Mercury Pro FourStroke applications will use the Bravo I<sup>®</sup> LT with all four vent holes plugged with solid PVS fittings. OptiMax 2-stroke applications require all four vent holes to be open. Upgrades from the Bravo I<sup>®</sup> FS to the Bravo I<sup>®</sup> LT require no change in pitch size when matching engine rpm.

PITCH	LEFT-HAND	RIGHT-HAND
19"	8M0142097	8M0126236
19.5"		8M0126237
20"	8M0142098	8M0121589
20.5"		8M0121590
21"	8M0142099	8M0121591
21.5"		8M0121592
22"	8M0142100	8M0121593
22.5"		8M0121594
23"	8M0142101	8M0121595
23.5"		8M0121596
24"	8M0142102	8M0121597
24.5"		8M0121598
25"	8M0142103	8M0121599
25.5"		8M0121600
26"	8M0142104	8M0121601
26.5"		8M0121602
27"	8M0142105	8M0121603
27.5"		8M0121604
28"	8M0142106	8M0129046
28.5"		8M0129048
29"	8M0142107	8M0129049

ALL MODELS 15.25" IN DIAMETER

Published July 2022

© 2022 MERCURY RACING. All Rights Reserved. Reproduction in whole or in part without permission is prohibited. All models and specifications are subject to change without notice or without incurring obligations to modify previously manufactured products. All trademarks belong to Brunswick Corporation.



[MERCURYRACING.COM/PROPELLERS](https://www.mercuryracing.com/propellers)

