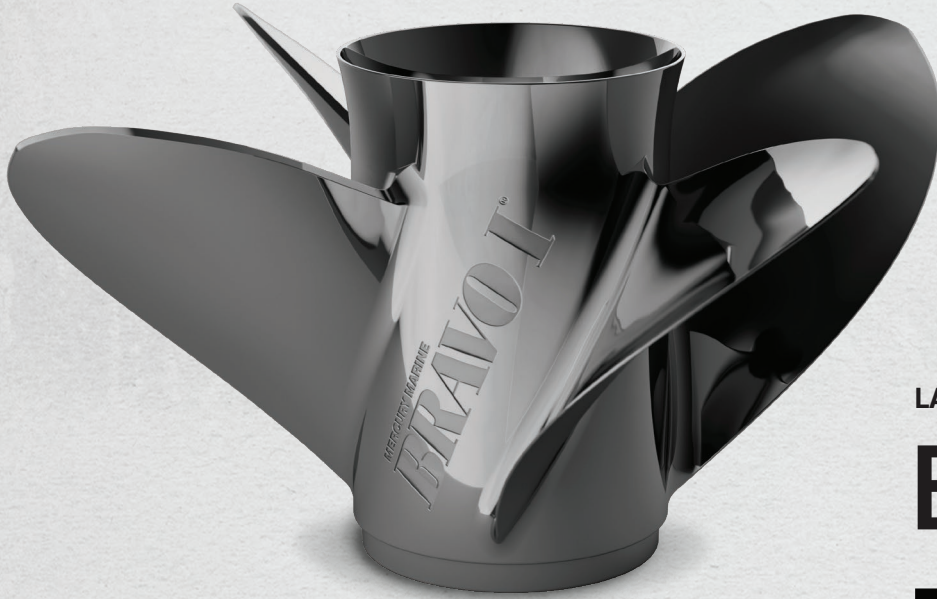




# WIDE OPEN



LAB FINISH

## BRAVO 1<sup>®</sup>

For V-bottom and cat owners looking to achieve maximum top speed, the Bravo 1<sup>®</sup> Lab Finish allows for an increase of 2 inches of pitch, which equates to a 2 to 3 mph gain at WOT. Top-end rpm will increase by about 300, and it will spool up quicker than a standard finish Bravo 1<sup>®</sup>. With the same barrel length as the Bravo LT, the Bravo 1<sup>®</sup> Lab Finish propeller is designed for four-stroke outboards and sterndrive applications that will benefit from thinner blades.

PITCH	LEFT-HAND	RIGHT-HAND
22"	831909L65	831910L65
23"	8M00073457	8M0073456
24"	831911L65	831912L65
25"	831911L45	831912L45
26"	831913L65	831914L65
27"	831913L45	831914L45
28"	831915L65	831916L65
29"	831915L45	831916L45
30"	831917L65	831918L65
31"	831917L45	831918L45
32"	831919L65	831920L65
33"	831919L45	831920L45
34"	832121L65	832122L65
35"	832121L45	832122L45
36"	832123L65	832124L65
37"	832123L45	832124L45

Published February 2024

© 2024 MERCURY RACING. All Rights Reserved. Reproduction in whole or in part without permission is prohibited. All models and specifications are subject to change without notice or without incurring obligations to modify previously manufactured products. All trademarks belong to Brunswick Corporation.



[MERCURYRACING.COM/PROPELLERS](https://www.mercuryracing.com/propellers)

