



PERFORMANCE PROPELLERS

2024 GUIDE



IN A WORLD OF LIMITS, CHOOSE FREEDOM.



PROPPELLER

A Mercury Racing propeller is the final critical component of a performance propulsion system. Each is designed to maximize acceleration, speed and handling in any application, from pleasure boating to poker runs to all-out competition racing. Cast from proprietary stainless steel alloys, hand-finished and zero-balanced, Mercury Racing propellers offer the ultimate in performance and durability.

CRAFTED PERFECTION	04
PROFILE SERIES	06
LAB FINISH BRAVO I	07
PRO FINISH BRAVO I FS	08
PRO FINISH BRAVO I LT	09
LAB FINISH BRAVO I OC	10
PRO FINISH BRAVO I XC	11
PRO FINISH BRAVO I XS	12
BRAVO THREE XR	13
CHOPPER II	15
REVOLUTION 4 XP	16
PRO FINISH ENERTIA ECO XP	17
LAB FINISH LIGHTNING E.T.	18
LAB FINISH MAX5	19
LAB FINISH MAX5 ST	20
LAB FINISH MAXIMUS LT/ST	21
PRO MAX	23
VENTERA	24
PRO FINISH SPITFIRE XP	25
T.E. CLEAVER	26
PRECISION SERIES	28
STERNDRIVE CNC CLEAVER	29
OUTBOARD 300HP CNC CLEAVER	31
OUTBOARD 400HP CNC CLEAVER	33
OUTBOARD 500HP CNC CLEAVER	35
PROP SLIP CALCULATOR	39
ACCESSORIES	40
PROPELLER HUB KITS	41





CRAFTED PERFECTION

Our artisans handcraft each propeller into a precision-tuned work of art, customized for a specific boat type and performance goal. Each propeller is then zero balanced and measured to ensure consistent performance every single time.

PROFILE SERIES

A raw stainless steel casting is transformed into a work of industrial art, handcrafted and fine tuned to deliver performance and durability that can't be achieved in mass production.

PROFILE^{SERIES}

ZERO BALANCE

Balanced by hand to perfection to eliminate vibration and deliver consistent RPM in multi-engine applications.

HALF-INCH PITCH INCREMENTS

Most Profile Series propellers are offered in precise half-inch pitch increments you can use to optimize RPM at wide-open throttle, in single and multi-engine applications.

FINISH OPTIONS

Choose the performance of a Mercury Racing Pro Finished[®] model fine-tuned with perfectly matching cup heights and a custom blade thickness profile, or step up to the blue printed perfection of a Mercury Racing Lab Finished[®] propeller with blueprinted blade profiles and additional blade thinning to reduce power-robbing drag and increase top-end RPM.

LAB FINISH

BRAVO I®

PROFILE SERIES

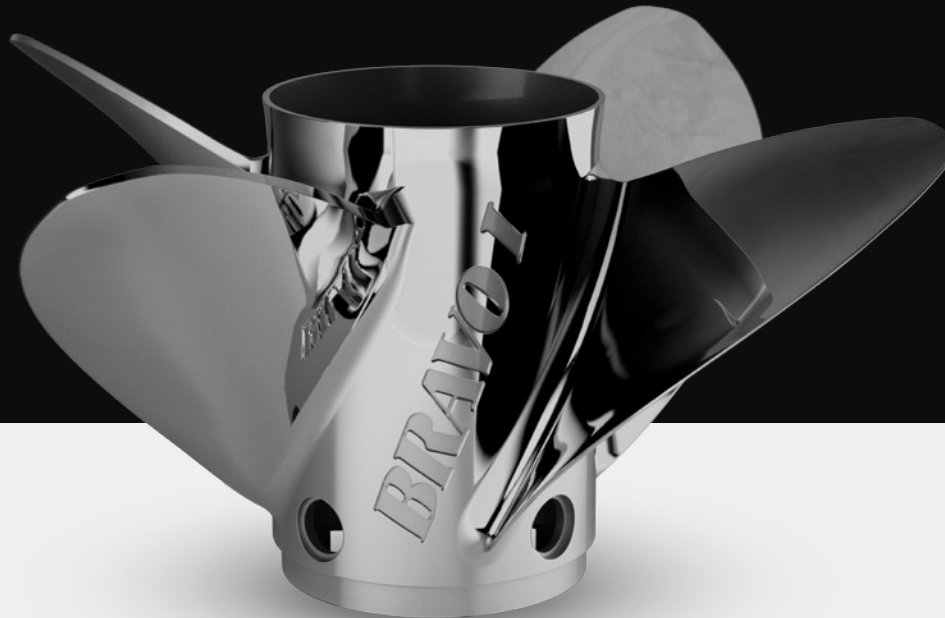


For V-bottom and cat owners looking to achieve maximum top speed, the Bravo I® Lab Finish allows for an increase of 2 inches of pitch, which equates to a 2 to 3 mph gain at WOT. Top-end rpm will increase by about 300, and it will spool up quicker than a standard finish Bravo I®. With the same barrel length as the Bravo LT, the Bravo I® Lab Finish propeller is designed for four-stroke outboards and sterndrive applications that will benefit from thinner blades.

PITCH	LEFT-HAND	RIGHT-HAND
22"	831909L65	831910L65
23"	8M00073457	8M0073456
24"	831911L65	831912L65
25"	831911L45	831912L45
26"	831913L65	831914L65
27"	831913L45	831914L45
28"	831915L65	831916L65
29"	831915L45	831916L45
30"	831917L65	831918L65
31"	831917L45	831918L45
32"	831919L65	831920L65
33"	831919L45	831920L45
34"	832121L65	832122L65
35"	832121L45	832122L45
36"	832123L65	832124L65
37"	832123L45	832124L45

*ALL MODELS 15.25" IN DIAMETER

BRAVO I[®] FS



Designed for outboard and sterndrive applications, the Mercury Racing Bravo I[®] FS propeller delivers unmatched time-to-plane performance, mid-range punch, mid-range cruise and top-end speeds for outboard bass, flats, cat flats, bay boats, offshore center consoles and sterndrive deck and vee bottoms under medium to heavy load. The patented Mercury[®] Performance Vent System[®] (PVS[®]) enables operators to dial in a propeller for peak planing performance. The PVS[®] system works in concert with robust blades that are hand blended and balanced by our propeller lab artisans.

The tuned exhaust tube minimizes stern lift for enhanced bow lift, handling and overall boat performance. Four-stroke outboard and sterndrive applications will use the Bravo I[®] FS with all four vent holes plugged with solid PVS[®] fittings. Larger, heavier multiple engine applications may benefit by taking one or two fittings out for improved planing. To maintain similar engine operating rpm in single engine applications, switching from a Tempest[®] Plus to the Bravo I[®] FS would require a 1-inch increase in pitch. A switch from the Fury[®] and Revolution 4[®] to the Bravo I[®] FS would require a 2-inch increase in pitch.

PITCH	LEFT-HAND	RIGHT-HAND
20"	8M0090453	8M0090451
20.5"		8M0118469
21"	8M0090457	8M0090455
21.5"		8M0118471
22"	8M0071088	8M0064450
22.5"		8M0128332
23"	8M0071089	8M0064468
23.5"		8M0152624
24"	8M0071090	8M0064469
24.5"		8M0128333
25"	8M0071091	8M0064470
25.5"		8M0129397
26"	8M0071092	8M0064471
26.5"		8M0128334
27"	8M0071093	8M0064472
28"	8M0071094	8M0064473
28.5"		8M0128335
29"	8M0071095	8M0064475
30"	8M0071096	8M0064476
31"	8M0071097	8M0064477
32"	8M0104418	8M0104417
33"	8M0104420	8M0104419

*ALL MODELS 15.25" IN DIAMETER

PRO FINISH

BRAVO I[®] LT

PROFILE SERIES



When it comes to propellers, “performance” is often measured by top speed alone. In reality, great all-around performance also requires outstanding hole shot, on-plane efficiency and fuel economy under a load. The Pro Finish Bravo I[®] LT outboard propeller covers all the performance bases and significantly optimizes ride quality. The flared exhaust tube lifts the stern. This brings the bow down for a more level ride. The result is improved handling and a dryer, more comfortable boating experience. Counter-rotation models expand the Bravo I[®] LT application from right-hand rotation, single engine outboard bay boats and multi-species hulls to multi-engine outboard center consoles.

- Handcrafted by Mercury Racing propeller artisans
- High luster Pro Finish for enhanced durability and corrosion resistance
- Patented Mercury[®] Performance Vent System[®] (PVS[®]) enables operators to dial in their propeller for peak planing performance

A majority of Mercury Verado[®] and Mercury Pro FourStroke applications will use the Bravo I[®] LT with all four vent holes plugged with solid PVS fittings. OptiMax 2-stroke applications require all four vent holes to be open. Upgrades from the Bravo I[®] FS to the Bravo I[®] LT require no change in pitch size when matching engine rpm.

PITCH	LEFT-HAND	RIGHT-HAND
19"	8M0142097	8M0126236
19.5"		8M0126237
20"	8M0142098	8M0121589
20.5"		8M0121590
21"	8M0142099	8M0121591
21.5"		8M0121592
22"	8M0142100	8M0121593
22.5"		8M0121594
23"	8M0142101	8M0121595
23.5"		8M0121596
24"	8M0142102	8M0121597
24.5"		8M0121598
25"	8M0142103	8M0121599
25.5"		8M0121600
26"	8M0142104	8M0121601
26.5"		8M0121602
27"	8M0142105	8M0121603
27.5"		8M0121604
28"	8M0142106	8M0129046
28.5"		8M0129048
29"	8M0142107	8M0129049
*ALL MODELS 15.25" IN DIAMETER		

BRAVO I[®] OC



The Mercury Racing Bravo I OC propeller is designed to enhance the performance of single and twin engine two stroke powered catamarans compared to legacy three blade propellers. A shortened exhaust barrel settles the stern, providing natural bow lift for reduced drag and enhanced speeds. Four right hand rotation pitch offerings (22.5", 23.5", 24.5" and 25.5") expand application of the Bravo I OC into the niche single-engine catamaran flats market in Texas as well. These go-fast cats will benefit from the smooth hole shot and increased top speeds delivered by the Bravo I[®] OC.

- Handcrafted by Mercury Racing propeller artisans
- Features a smaller overall diameter with added blade tip cups for improved acceleration and holding power throughout the engine RPM operating range
- Patented Mercury[®] Performance Vent System[®] (PVS[®]) enables operators to dial in their propeller for peak planing performance
- Available in pitch sizes ranging from 22.5" to 33" (even and odd) and left and right-hand rotation

PITCH	LEFT-HAND	RIGHT-HAND
22.5"		8M0144040
23.5"		8M0144042
24.5"		8M0144044
25.5"		8M0144046
26"		8M0129147
26.5"		8M0129148
27"		8M0129149
28"	8M0092003	8M0092002
29"	8M0092005	8M0092004
30"	8M0092007	8M0092006
31"	8M0092009	8M0092008
32"	8M0092011	8M0092010
33"	8M0092013	8M0092012
ALL MODELS 14.75" IN DIAMETER		

PRO FINISH

PROFILE SERIES

BRAVO I[®] XC



The Mercury Racing[®] Pro Finish Bravo I[®] XC propeller is designed specifically for single outboard powered hulls. This prop features blade cupping that allows the engine to be run at elevated transom heights without sacrificing performance. Generous blade area helps the prop to stay hooked up for quick planing and enhanced performance throughout the engine RPM range. The exhaust tube is designed to help keep the boat on plane and stable at lower speeds. Five pitch offerings from 19" through 22" in one-inch increments permit precision tuning for many applications. A 24" pitch model is also offered. The Bravo I[®] XC often outperforms four blade propellers, delivering shorter time to plane, improved grip at lower speeds and quicker throttle response.

PITCH	RIGHT-HAND
19"	8M0118468
20"	8M0100111
21"	8M0118470
22"	8M0100111
24"	8M0100112
*ALL MODELS 15.3" IN DIAMETER	

BRAVO I[®] XS



The Mercury Racing Pro Finish Bravo I[®] XS outboard propeller offers excellent time-to-plane performance, strong mid-range punch, and awesome top-end speed for bass, flats, cat flats, and performance center-console bay boats. The dual Mercury Performance Vent System[®] (PVS[®]) holes enable the operator to fine tune the amount of venting needed for quick planing. The stainless steel prop, designed for use on Mercury V6 OptiMax, OptiMax XS and OptiMax Pro XS outboards, features four robust blades and a tuned exhaust tube. The shortened exhaust tube provides greater top-end speed, while minimizing stern lift for improved boat handling and performance.

Half-inch pitch models enable operators to precision tune performance-oriented bass boats and center consoles for maximum power and efficiency. And, for some applications, the half-inch pitch will offer additional bow lift for enhanced top speed as well. The new half-inch pitch offerings benefit on-plane performance, mid-range fuel economy and top speed for single-engine four stroke applications. The action of the Mercury Performance Vent System[®] can easily be adjusted by simply adding PVS[®] fittings.

PITCH	RIGHT-HAND
22"	831910L60
22.5"	8M0111147
23"	831910L80
23.5"	8M0100104
24"	831912L60
24.5"	8M0111148
25"	831912L80
25.5"	8M0100105
26"	831914L60
26.5"	8M0111149
27"	831914L80
27.5"	8M0100106
28"	831916L60
28.5"	8M0111150
29"	831916L80
29.5"	8M0100107
30"	831918L60
30.5"	8M0111151
31"	831918L80
31.5"	8M0100109

*ALL MODELS 15.25" IN DIAMETER

BRAVO THREE[®] XR



This robust set of counter rotating, stainless steel propellers was designed for use on big boats with big power. A large diameter four-blade front propeller coupled with a smaller diameter, three-blade rear propeller provides unmatched acceleration, tracking and handling. Enormous cup built into the trailing edges of both front and rear props results with tremendous planing performance and enhanced fuel economy. The enhanced cup is especially useful for high torque diesel applications.

An upgrade from the standard Bravo Three propellers to the Pro Finished Bravo 3[®] XR props will result in one inch pitch decrease to match the same RPM. The decrease in pitch may result in 3-5 mph increase at cruise with 1-2 mph increase in top-end speed.

- Zero balanced, matched set
- Left-hand, 4-blade forward and right-hand, 3-blade rear propellers
- Enhanced blade cup for improved planing performance and fuel economy
- Recommended for 260-350 H.P. diesel and 260-525 H.P. gasoline engines
- Fit for use on standard Bravo Three, Bravo Three X and Bravo Three XR drives

PITCH	DIAMETER	BLADES	ROTATION	PART #
20"	16"	4	LEFT	8M0125739
	15"	3	RIGHT	8M0125738
21"	16"	4	LEFT	842939L70
	15"	3	RIGHT	842940L70
21.5"	16"	4	LEFT	8M0125741
	15"	3	RIGHT	8M0125740
22"	16"	4	LEFT	8M0073458
	15"	3	RIGHT	8M0073459
23"	16"	4	LEFT	842941L70
	15"	3	RIGHT	842942L70
23.5"	16"	4	LEFT	8M0125743
	15"	3	RIGHT	8M0125742
24"	16"	4	LEFT	842941L80
	15"	3	RIGHT	842942L80
25"	15.8"	4	LEFT	842943L70
	14.8"	3	RIGHT	842944L70
25.5"	15.8"	4	LEFT	8M0125745
	14.8"	3	RIGHT	8M0125744
26"	15.8"	4	LEFT	842943L80
	14.8"	3	RIGHT	842944L80
27"	15.5"	4	LEFT	842945L70
	14.5"	3	RIGHT	842946L70
27.5"	15.5"	4	LEFT	8M0125747
	14.5"	3	RIGHT	8M0125746
28"	15.5"	4	LEFT	842945L80
	14.5"	3	RIGHT	842946L80



CHOPPER II[®]



The Mercury[®] exclusive X7[®] alloy makes the Chopper II propeller more durable than ever. The Chopper II, designed for 40-60 horsepower outboards, works well on boats requiring bow lift. The enhanced bow lift reduces drag, increasing the efficiency of the boat and improving overall performance. The Chopper II also permits higher engine mounting on the transom for greater speed.

PITCH	DIAMETER	ROTATION	PART #
18"	10.38"	RH	43592A71

REVOLUTION 4[®] XP



The Mercury Racing[®] Revolution 4[®] XP propeller can be used to dial in with extreme precision the performance of multi-engine, stepped-bottom performance center consoles and single-engine bay boats. The standard-length exhaust tube helps reduce time-to-plane and provides stern lift at speed for maximum hull performance and an improved ride in a variety of conditions.

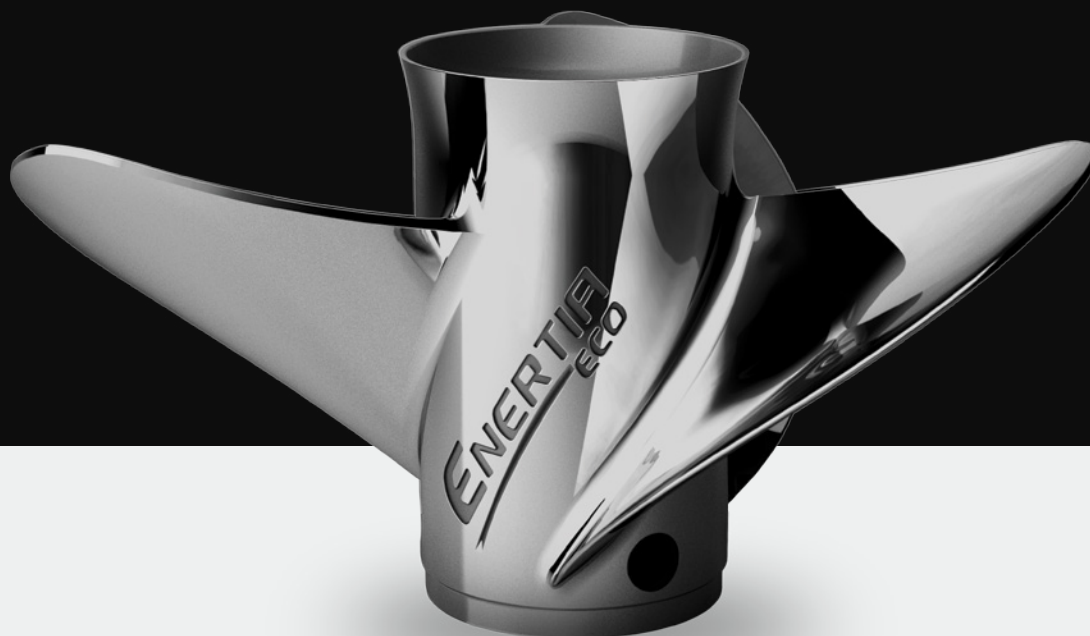
- Handcrafted by Mercury Racing Propeller Artisans
- The patented Mercury[®] Performance Vent System[®] (PVS) can be used to fine tune the amount of exhaust venting needed for quick planing in certain applications. In most cases Mercury Verado[®], Mercury Pro XS[®] FourStroke and MerCruiser[®] sterndrive applications will run the Revolution 4[®] XP with all four vent holes plugged with solid PVS fittings.

PITCH	LEFT-HAND	RIGHT-HAND
13"		8M0142110
14"	8M0142111	8M0142112
15"	8M0142113	8M0142114
16"	8M0142115	8M0142116
17"	8M0142117	8M0142118

PRO FINISH

PROFILE SERIES

ENERTIA[®] ECO XP



The Mercury Racing[®] Enertia[®] ECO XP propeller provides “Extreme Precision” when dialing in engine speed for maximized power output and efficiency. Based on the award-winning Mercury Enertia ECO propeller, the Pro Finish ECO XP offers next level refinement with zero balancing, custom cup heights, and Racing specific blade profiling, ideal for dialing in multi engine center consoles and bay boats.

Mercury Racing propeller artisans customize blade cups to offer 16.5”, 17.5”, 18.5”, 19.5”, 20.5”, 21.5” and 22.5” pitch sizes ranging from 17” to 23” pitch in two inch increments. The 3-blade stainless steel prop features the Mercury patented Performance Vent System[®] (PVS), which enables the operator to fine tune the amount of venting required for quick planing. The standard-length exhaust tube reduces time-to-plane and provides stern lift for maximum hull performance and an improved ride in a variety of conditions.

PITCH	LEFT-HAND	RIGHT-HAND
16.5”	8M0110303	8M0110304
17.5”	8M0119053	8M0119052
18.5”	8M0108351	8M0108350
19.5”	8M0119055	8M0119056
20.5”	8M0108353	8M0108352
21.5”	8M0119057	8M0119058
22.5”	8M0108357	8M0108354

*ALL MODELS 16” IN DIAMETER

LAB FINISH

PROFILE SERIES

LIGHTNING E.T.[®]



First introduced as an outboard drag racing propeller, the Lightning E.T. also delivers top performance in a variety of single-engine recreational boat applications, including bass, flats and modified vee bottom boats running up to 300hp. Besides delivering an incredible hole shot and awesome acceleration, the Lightning E.T. also produces natural bow lift, reducing drag and increasing the efficiency of the boat. This adds up to higher speeds and better fuel economy with less engine trim - because less horsepower is used to lift the boat, and more power is devoted to achieving top-end speed and acceleration. The exclusive Mercury[®] X7[®] alloy makes the Mercury Racing[®] Lightning E.T.[®] propeller extremely durable.

PITCH	DIAMETER	PART #
26"	14.5"	849246L62
28"	14.5"	849248L62
30"	14.5"	849506L62
32"	14.5"	849508L62

LAB FINISH

MAX5[®]

PROFILE SERIES



The Mercury Racing MAX5 propeller is designed for both single and multi engine applications, from 250R outboards to 600sci sterndrives, in which drive heights are very high and speeds are typically in excess of 75 mph. The MAX5 will often cut slip percentages in half when compared to its Bravo I counterpart, leading to improved mid range cruise and top end speeds.

One-half inch pitch offerings enable engines to be dialed in to their maximum rpm operating range for enhanced throttle response, optimized cruise fuel efficiency and top speed. The stainless steel prop features the patented Mercury® Performance Vent System® (PVS®) which allows the operator to fine-tune the amount of exhaust venting needed for quick planing.

MAX5 15" DIAMETER

PITCH	LEFT-HAND	RIGHT-HAND
22.3"	8M0131145	8M0131144
22.8"	8M0131147	8M0131146
23"	8M0117983	8M0117982
23.5"	8M0117985	8M0117984
24"	8M0117987	8M0117986
24.3"	8M0131149	8M0131148
24.8"	8M0131151	8M0131150
25"	8M0117989	8M0117988
25.5"	8M0117991	8M0117990
26"	8M0117993	8M0117992
26.3"	8M0131153	8M0131152
26.8"	8M0131155	8M0131154
27"	8M0117995	8M0117994
27.5"	8M0117997	8M0117996
28"	8M0117999	8M0117998
28.3"	8M0131157	8M0131156
28.8"	8M0131159	8M0131158
29"	8M0118001	8M0118000
29.5"	8M0118003	8M0118002
30"	8M0118005	8M0118004
30.3"	8M0131161	8M0131160
30.8"	8M0131163	8M0131162
31"	8M0118007	8M0118006
31.5"	8M0118009	8M0118008
32"	8M0118011	8M0118010
32.3"	8M0131165	8M0131164
32.8"	8M0131167	8M0131166
33"	8M0118013	8M0118012
33.5"	8M0118015	8M0118014
34"	8M0118017	8M0118016

MAX5 15.25" DIAMETER

PITCH
22.5"
23"
23.5"
24"
24.5"
25"
25.5"
26"
26.5"
27"
27.5"
28"
28.5"
29"
29.5"
30"
30.5"
31"
31.5"
32"
32.5"
33"
33.5"
34"

MAX5[®] ST



The Mercury Racing MAX5 ST propeller is designed specifically to maximize the performance of boats powered by the 4.6L V8 Mercury Racing[®] 300R outboard with a Sport Master gearcase. The shortened exhaust barrel enhances the performance of single-engine bass boats and twin-engine catamarans by keeping the stern planted for a confident ride, while the large 15.25-inch-diameter helps this prop stay hooked up at extreme engine heights.

Half-inch pitch offerings enable engines to be dialed in to their maximum rpm operating range for enhanced throttle response, optimized cruise fuel efficiency and top speed. The stainless steel MAX5 ST features the patented Mercury[®] Performance Vent System[®] (PVS[®]), which enables the user to fine-tune the amount of exhaust venting needed for quick planing.

PITCH	LEFT-HAND	RIGHT-HAND
22.5"	8M0156495	8M0156494
23"	8M0156497	8M0156496
23.5"	8M0156499	8M0156498
24"	8M0156501	8M0156500
24.5"	8M0156505	8M0156504
25"	8M0156507	8M0156506
25.5"	8M0156509	8M0156508
26"	8M0156511	8M0156510
26.5"	8M0156515	8M0156514
27"	8M0156517	8M0156516
27.5"	8M0156519	8M0156518
28"	8M0156521	8M0156520
28.5"	8M0156525	8M0156524
29"	8M0156527	8M0156526
29.5"	8M0156529	8M0156528
30"	8M0156531	8M0156530
30.5"	8M0156535	8M0156534
31"	8M0156537	8M0156536
31.5"	8M0156539	8M0156538
32"	8M0156541	8M0156540
32.5"	8M0156545	8M0156544
33"	8M0156547	8M0156546
33.5"	8M0156549	8M0156548
34"	8M0156551	8M0156550

*ALL MODELS 15.25" IN DIAMETER

MAXIMUS LT/ST[®]



MAXIMUS LT

High-performance stern drives will benefit from the ability to raise drive heights higher than ever before with the Maximus. By raising drive heights, less drag is achieved because less of the gearcase is in the water.

- A boat requiring increased stern lift will benefit from the Long Tube version of the Maximus
- Designed for stern drive applications that have a very high X-dimension
- Offered in 15.25-inch diameter for the Bravo XR Short Sport Master and 15.625-inch diameter for Bravo XR Dual Water Pickup and Sport Master.

MAXIMUS ST

Designed for stern drives and big horsepower outboards, the Maximus ST is available in 24" to 34" (even) pitch sizes in both left and right-hand rotation. It features a cut-down diameter (15.6" to 15.3") and a shortened exhaust tube for enhanced performance. The Maximus ST is rated for up to 600 h.p.

MAXIMUS ST

PITCH	DIAMETER	LEFT-HAND	RIGHT-HAND
23"	15.25"	889975L48	889974L48
	15.63"	889975L49	889974L49
24"	15.00"	889975L67	889974L67
	15.25"	889975L68	889974L68
	15.63"	889975L69	889974L69
25"	15.25"	889965L48	889964L48
	15.63"	889965L49	889964L49
26"	15.00"	889965L67	889964L67
	15.25"	889965L68	889964L68
	15.63"	889965L69	889964L69
27"	15.25"	889967L48	889966L48
	15.63"	889967L49	889966L49
28"	15.00"	889967L67	889966L67
	15.25"	889967L68	889966L68
	15.63"	889967L69	889966L69
29"	15.25"	889969L48	889968L48
	15.63"	889969L49	889968L49
30"	15.00"	889969L67	889968L67
	15.25"	889969L68	889968L68
	15.63"	889969L69	889968L69
31"	15.25"	889971L48	889970L48
	15.63"	889971L49	889970L49
32"	15.00"	889971L67	889970L67
	15.25"	889971L68	889970L68
	15.63"	889971L69	889970L69
33"	15.25"	889973L48	889972L48
	15.63"	889973L49	889972L49
34"	15.00"	889973L67	889972L67
	15.25"	889973L68	889972L68
	15.63"	889973L69	889972L69
35"	15.25"	889973L88	889972L88
	15.63"	889973L89	889972L89

MAXIMUS LT

PITCH	DIAMETER	LEFT-HAND	RIGHT-HAND
23"	15.25"	889975L44	889974L44
	15.63"	889975L45	889974L45
24"	15.00"	889975L63	889974L63
	15.25"	889975L64	889974L64
	15.63"	889975L65	889974L65
25"	15.25"	889965L44	889964L44
	15.63"	889965L45	889964L45
26"	15.00"	889965L63	889964L63
	15.25"	889965L64	889964L64
	15.63"	889965L65	889964L65
27"	15.25"	889967L44	889966L44
	15.63"	889967L45	889966L45
28"	15.00"	889967L63	889966L63
	15.25"	889967L64	889966L64
	15.63"	889967L65	889966L65
29"	15.25"	889969L44	889968L44
	15.63"	889969L45	889968L45
30"	15.00"	889969L63	889968L63
	15.25"	889969L64	889968L64
	15.63"	889969L65	889968L65
31"	15.25"	889971L44	889970L44
	15.63"	889971L45	889970L45
32"	15.00"	889971L63	889970L63
	15.25"	889971L64	889970L64
	15.63"	889971L65	889970L65
33"	15.25"	889973L44	889972L44
	15.63"	889973L45	889972L45
34"	15.00"	889973L63	889972L63
	15.25"	889973L64	889972L64
	15.63"	889973L65	889972L65
35"	15.25"	889973L84	889972L84
	15.63"	889973L85	889972L85

PRO MAX[®]



The Mercury Racing[®] Pro Max[®] propeller is designed to lift light- to medium-weight hulls on plane quickly and to deliver outstanding top-end speed. The Pro Max features Mercury Racing[®] Pro E.T.[®] drag race blades combined with a custom through-hub exhaust tube. This unique combination provides a 33% faster hole shot than the Pro E.T. and top-end speeds up to three mph faster.

The Mercury[®] patented Performance Vent System[®] (PVS). PVS[®] enables the operator to fine tune exhaust venting for ideal planing performance and enhanced acceleration. New half-inch pitch models enable operators to precision-tune their hulls for maximum all-around performance. The Pro Max propeller is an ideal match for OptiMax[®] 300XS, OptiMax Pro XS[®], Verado[®] 400R and Verado Pro FourStroke outboard applications on hulls with natural bow lift including bass, flats, cat flats, high performance sport boats and race boats.

PITCH	ROTATION	PART #
LAB FINISH		
24"	RH	8M0079692
26"	RH	8M0079693
28"	RH	8M0079694
30"	RH	8M0079695
32"	RH	8M0079696
PRO FINISH		
22.5"	RH	8M0112981
23"	RH	8M0079698
23.5"	RH	8M0112982
24"	RH	8M0079699
24.5"	RH	8M0112983
25"	RH	8M0079700
25.5"	RH	8M0112984
26"	RH	8M0079701
26.5"	RH	8M0112985
27"	RH	8M0079702
27.5"	RH	8M0112986
28"	RH	8M0079703
28.5"	RH	8M0112987
29"	RH	8M0079704
29.5"	RH	8M0112988
30"	RH	8M0079704
30.5"	RH	8M0112989
31"	RH	8M0079706
31.5"	RH	8M0112990
32"	RH	8M0079707
*ALL MODELS 14.5" IN DIAMETER		

VENTERA™



The Mercury Racing® Ventera propeller is designed to handle big outboard horsepower on the fastest high-performance center consoles, day cruisers and bay boats.

Exclusive to the Mercury Racing Profile Series, this four-blade propeller is engineered specifically to carry more load with greater efficiency at high speeds and in semi-surfacing installations. The Ventera features an increased blade diameter, from 14.625 inches to 15 inches, that created a new blade thickness curve to handle more power without sacrificing performance.

The Mercury Racing Ventera propeller is available in 18 to 27.5 pitch in half-inch increments for precise tuning of any application. Each prop is hand finished and zero-balanced by Mercury Racing propeller artisans. Choose the hand-finished performance of a Mercury Racing Pro Finished® model or step up to the race-spec perfection of a Mercury Racing Lab Finished® propeller.

The Flo-Torq HD modular hub kit is available for boats running over 65 mph.

VENTERA PRO FINISH

PITCH	LEFT-HAND	RIGHT-HAND
18	8M0214711	8M0214710
18.5	8M0214713	8M0214712
19	8M0214715	8M0214714
19.5	8M0214717	8M0214716
20	8M0214719	8M0214718
20.5	8M0214721	8M0214720
21	8M0214723	8M0214722
21.5	8M0214725	8M0214724
22	8M0214727	8M0214726
22.5	8M0214729	8M0214728
23	8M0214731	8M0214730
23.5	8M0214733	8M0214732
24	8M0214735	8M0214734
24.5	8M0214737	8M0214736
25	8M0214739	8M0214738
25.5	8M0214741	8M0214740
26	8M0173919	8M0173918
26.5	8M0173921	8M0173920
27	8M0173923	8M0173922
27.5	8M0173925	8M0173924

*ALL MODELS 15" IN DIAMETER

VENTERA LAB FINISH

PITCH	LEFT-HAND	RIGHT-HAND
19	8M0214743	8M0214742
20	8M0214745	8M0214744
21	8M0214747	8M0214746
22	8M0214749	8M0214748
23	8M0214751	8M0214750
24	8M0214753	8M0214752
25	8M0214755	8M0214754
26	8M0173941	8M0173940
26.5	8M0173943	8M0173942
27	8M0173945	8M0173944
27.5	8M0173947	8M0173946

VENTERA LAB SATIN FINISH

PITCH	LEFT-HAND	RIGHT-HAND
23	8M0214757	8M0214756
24	8M0214759	8M0214758
24.5	8M0214761	8M0214760
25	8M0214763	8M0214762
25.5	8M0214765	8M0214764
26	8M0173948	8M0173949
26.5	8M0173950	8M0173951
27	8M0173952	8M0173953
27.5	8M0173954	8M0173955

PRO FINISH

PROFILE SERIES

SPITFIRE® XP



Designed to be the ultimate prop for the Mercury Racing® 60R Outboard, the Spitfire® XP offers unmatched hole shot, handling, and top-end speed. The four-blade design and long barrel offer lightning-fast hole shot, ideal for shallow-water running. This prop is also suitable for other outboards up to 115hp that benefit from elevated engine heights and additional stern lift.

This prop features the Mercury Racing® Pro Finish, expertly hand-finished and fine-tuned with perfectly matching cup heights and a custom blade thickness profile for consistent, fine-tuned performance. Use half-inch pitch increments to dial in the ideal RPM at wide open throttle.

PITCH	DIAMETER	PART #
12"	14"	8M0167641
12.5"	14"	8M0167642
13"	14"	8M0167643
13.5"	13.5"	8M0167659
14"	13.5"	8M0167660
14.5"	13.5"	8M0167661
15"	13.5"	8M0167662
15.5"	13"	8M0167664
16"	13"	8M0167665
16.5"	13"	8M0167666
17"	13"	8M0167667
17.5"	12.7"	8M0167697
18"	12.7"	8M0167698
18.5"	12.7"	8M0167699
19"	12.7"	8M0167700
19.5"	12.7"	8M0167702
20"	12.7"	8M0167703
20.5"	12.7"	8M0167704
21"	12.7"	8M0167705

T.E. CLEAVER[®]



Mercury Racing[®] produces the T.E. (Thru Hub Exhaust) Cleaver for 40 – 60 HP outboards designed to run high for maximum speed. This propeller works best with light weight hulls; primarily cats or tunnels and limited use with vee bottoms.

PITCH	DIAMETER	ROTATION	PART #
22"	12"	RH	891510A01

PRECISION SERIES

Custom manufactured with absolute precision to propel the fastest high-performance and competition powerboats.

PRECISION SERIES

CNC PERFECTION

Every dimension is machined into the propeller on state-of-the-art 5-axis mills, rather than cast, to ensure that lift, handling, and speed characteristics are absolutely consistent.

ALWAYS REPEATABLE

By retaining manufacturing data an exact copy of your ideal propeller can be CNC machined at any time should a spare or replacement be required.

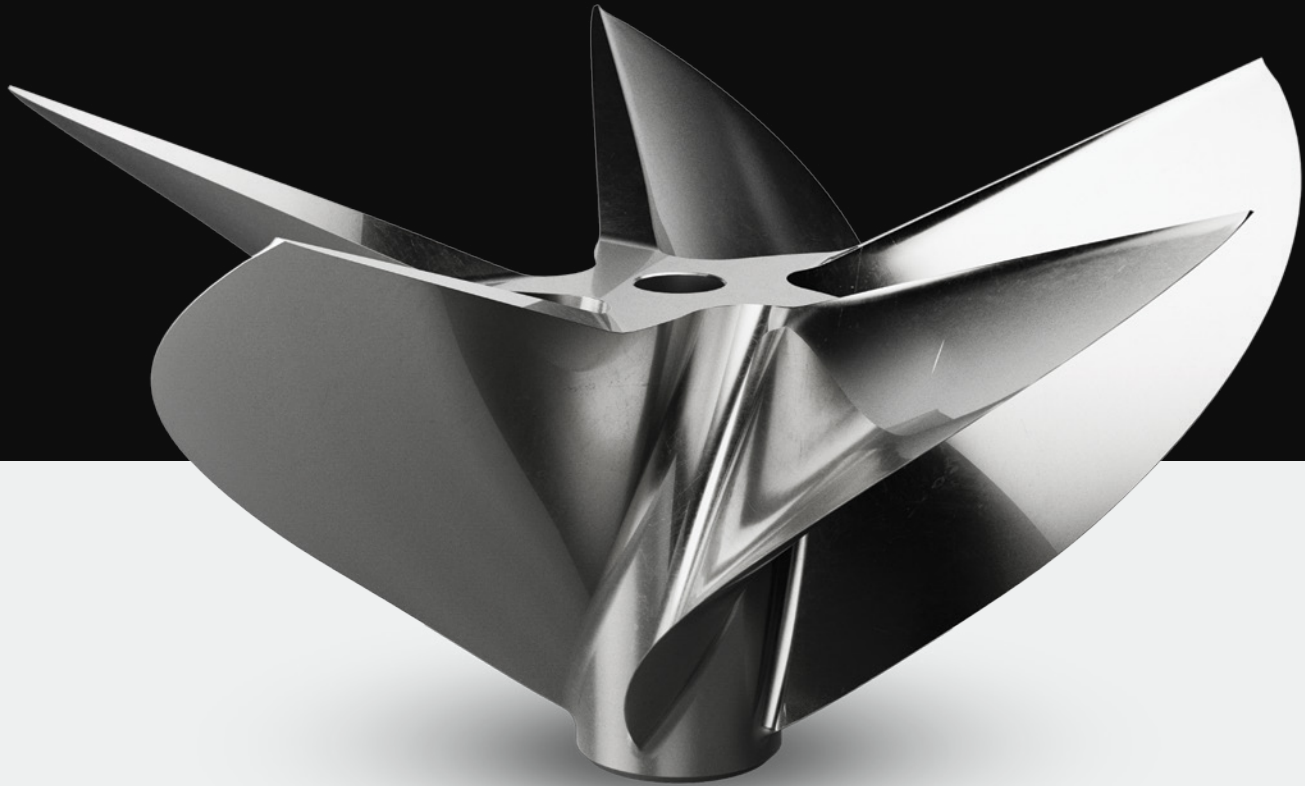
MADE TO ORDER

Each Precision Series propeller is custom made to order after consultation with Mercury Racing propeller experts. Thousands of pitch, rake and diameter combinations are available to dial in the maximum performance of almost any boat.

STERNDRIVE

PRECISION SERIES

CNC CLEAVER[®]



The Mercury Racing Sterndrive 5 and 6 blade CNC Cleavers are designed to pair with M6 and M8 drives, although a Bravo XR Sportmaster version is available for 520 to 600hp applications. Each propeller is custom made to order, the precise 5-axis CNC machining process guarantees pitch, diameter, and rake are perfectly true to ensure that lift, handling, and speed characteristics are not only class-leading, but consistent. Thousands of pitch, rake and diameter combinations are available to dial in the maximum performance of almost any high-performance boat. From Unlimited Offshore class racers to poker runners, the Mercury Racing CNC Cleaver in 5- or 6-blade configuration is the propeller of choice for the most-demanding boat owners.

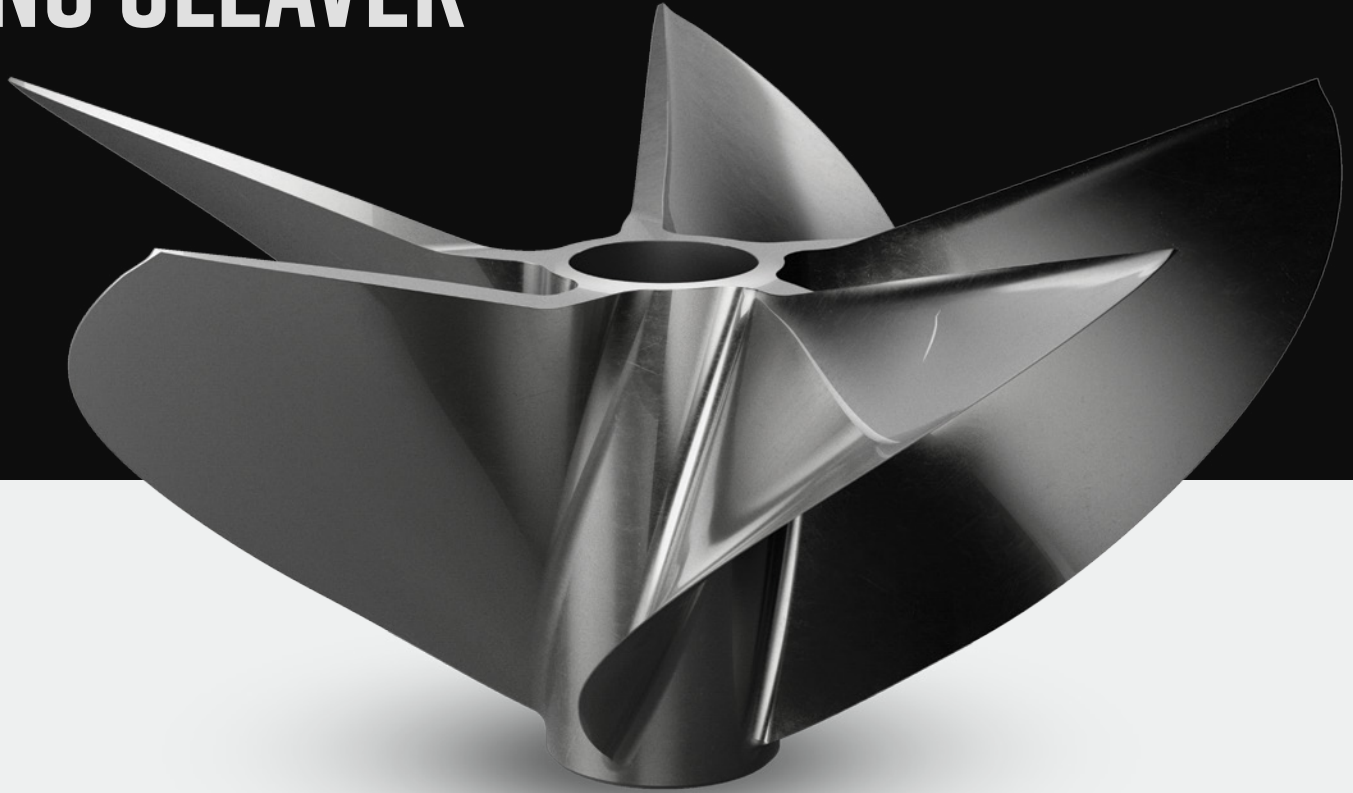
- Available in 12, 15, 18 and 21 degree rake
- Custom horsepower curves from 600hp to 1800hp
- 14.50" to 18" diameter
- Pitch range 26" to 40" with half inch increments available



OUTBOARD | 300HP

PRECISION SERIES

CNC CLEAVER[®]



The Mercury Racing 300HP 5-blade Mercury Racing CNC Outboard Cleaver propellers are recommended for use with the Mercury Racing 300R outboard fitted with the surface-piercing Sport Master gearcase. The precision-machined props are designed to maximize boat performance and handling in a variety of 300R Sport Master applications. Mercury Racing's proprietary 5-axis CNC production process yields the most consistent, durable, and advanced propellers we have ever produced.

Outboard Cleaver propellers are available with pitch ranges of 26 to 40 inch, 14.63 to 15.25 inch diameter, and 15 or 18 degree rake.

300HP OUTBOARD CLEAVER 18° RAKE

PITCH	DIAMETER	LH	RH
26"	14.63"	8M0187775	8M0187774
	14.75"	8M0187835	8M0187834
	15.00"	8M0187837	8M0187836
	15.25"	8M0187839	8M0187838
27"	14.63"	8M0188075	8M0188074
	14.75"	8M0188077	8M0188076
	15.00"	8M0188079	8M0188078
	15.25"	8M0188193	8M0188192
28"	14.63"	8M0189087	8M0189086
	14.75"	8M0178073	8M0178074
	15.00"	8M0189089	8M0189088
	15.25"	8M0189091	8M0189090
29"	14.63"	8M0189125	8M0189124
	14.75"	8M0189127	8M0189126
	15.00"	8M0189129	8M0189128
	15.25"	8M0189131	8M0189130
30"	14.63"	8M0189143	8M0189142
	14.75"	8M0189369	8M0189368
	15.00"	8M0189371	8M0189370
	15.25"	8M0189373	8M0189372
31"	14.63"	8M0189379	8M0189378
	14.75"	8M0189381	8M0189380
	15.00"	8M0189383	8M0189382
	15.25"	8M0189385	8M0189384
32"	14.63"	8M0189391	8M0189390
	14.75"	8M0189393	8M0189392
	15.00"	8M0189395	8M0189394
	15.25"	8M0189397	8M0189396
33"	14.63"	8M0175873	8M0175874
	14.75"	8M0173605	8M0173606
	15.00"	8M0189405	8M0189404
	15.25"	8M0189407	8M0189406
34"	14.63"	8M0189439	8M0189438
	14.75"	8M0189441	8M0189440
	15.00"	8M0189443	8M0189442
	15.25"	8M0189445	8M0189444
35"	14.63"	8M0189455	8M0189454
	14.75"	8M0189457	8M0189456
	15.00"	8M0189459	8M0189458
	15.25"	8M0189461	8M0189460
36"	14.63"	8M0189471	8M0189470
	14.75"	8M0189473	8M0189472
	15.00"	8M0189475	8M0189474
	15.25"	8M0189477	8M0189476
37"	14.63"	8M0189485	8M0189484
	14.75"	8M0189487	8M0189486
	15.00"	8M0189489	8M0189488
	15.25"	8M0189491	8M0189490

300HP OUTBOARD CLEAVER 15° RAKE

PITCH	DIAMETER	LH	RH
26"	14.63"	8M0187767	8M0187766
	14.75"	8M0187769	8M0187768
	15.00"	8M0187771	8M0187770
	15.25"	8M0187773	8M0187772
27"	14.63"	8M0187841	8M0187840
	14.75"	8M0187843	8M0187842
	15.00"	8M0188071	8M0188070
	15.25"	8M0188073	8M0188072
28"	14.63"	8M0188195	8M0188194
	14.75"	8M0188197	8M0188196
	15.00"	8M0189083	8M0189082
	15.25"	8M0189085	8M0189084
29"	14.63"	8M0189093	8M0189092
	14.75"	8M0189095	8M0189094
	15.00"	8M0189121	8M0189120
	15.25"	8M0189123	8M0189122
30"	14.63"	8M0189133	8M0189132
	14.75"	8M0189135	8M0189134
	15.00"	8M0173545	8M0173546
	15.25"	8M0189139	8M0189136
31"	14.63"	8M0189375	8M0189374
	14.75"	8M0175699	8M0175698
	15.00"	8M0174087	8M0174086
	15.25"	8M0189377	8M0189376
32"	14.63"	8M0189387	8M0189386
	14.75"	8M0175691	8M0175692
	15.00"	8M0173547	8M0173548
	15.25"	8M0189389	8M0189388
33"	14.63"	8M0169471	8M0169470
	14.75"	8M0189399	8M0189398
	15.00"	8M0189401	8M0189400
	15.25"	8M0189403	8M0189402
34"	14.63"	8M0189433	8M0189432
	14.75"	8M0189435	8M0189434
	15.00"	8M0175041	8M0175042
	15.25"	8M0189437	8M0189436
35"	14.63"	8M0189447	8M0189446
	14.75"	8M0189449	8M0189448
	15.00"	8M0189451	8M0189450
	15.25"	8M0189453	8M0189452
36"	14.63"	8M0189463	8M0189462
	14.75"	8M0189465	8M0189464
	15.00"	8M0189467	8M0189466
	15.25"	8M0189469	8M0189468
37"	14.63"	8M0189479	8M0189478
	14.75"	8M0181197	8M0181196
	15.00"	8M0189481	8M0189480
	15.25"	8M0189483	8M0189482

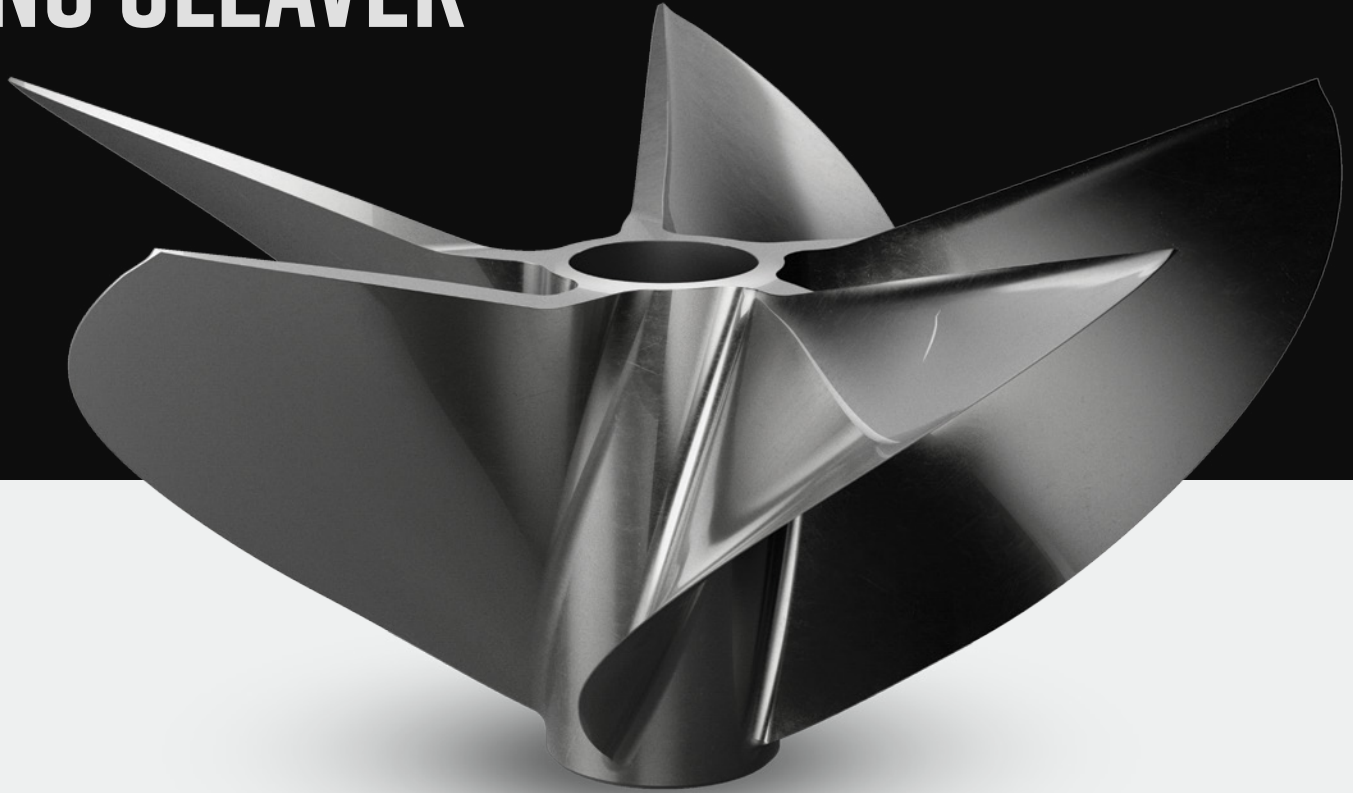
300HP OUTBOARD CLEAVER 15° RAKE

PITCH	DIAMETER	LH	RH
38"	14.63"	8M0189493	8M0189492
	14.75"	8M0182365	8M0182366
	15.00"	8M0189495	8M0189494
	15.25"	8M0189497	8M0189496
39"	14.63"	8M0189499	8M0189498
	14.75"	8M0189501	8M0189500
	15.00"	8M0189503	8M0189502
	15.25"	8M0189505	8M0189504
40"	14.63"	8M0189507	8M0189506
	14.75"	8M0189509	8M0189508
	15.00"	8M0189511	8M0189510
	15.25"	8M0189513	8M0189512

OUTBOARD | 400HP

PRECISION SERIES

CNC CLEAVER[®]



The Mercury Racing 400HP 5-blade Mercury Racing CNC Outboard Cleaver propellers are recommended for use with the Mercury Racing 400R outboard fitted with the surface-piercing Sport Master gearcase. The precision-machined props are designed to maximize boat performance and handling in a variety of 400R Sport Master applications. Mercury Racing's proprietary 5-axis CNC production process yields the most consistent, durable, and advanced propellers we have ever produced.

Outboard Cleaver propellers are available with pitch ranges of 26 to 40 inch, 14.63 to 15.25 inch diameter, and 15 or 18 degree rake.

400HP OUTBOARD CLEAVER 18° RAKE

PITCH	DIAMETER	LH	RH
26"	14.63"	8M0186223	8M0186222
	14.75"	8M0186235	8M0186234
	15.00"	8M0152451	8M0152452
	15.25"	8M0186237	8M0186236
27"	14.63"	8M0186283	8M0186282
	14.75"	8M0186285	8M0186284
	15.00"	8M0186287	8M0186286
	15.25"	8M0186289	8M0186288
28"	14.63"	8M0186365	8M0186364
	14.75"	8M0186367	8M0186366
	15.00"	8M0163003	8M0163002
	15.25"	8M0146899	8M0146898
29"	14.63"	8M0186415	8M0186414
	14.75"	8M0186417	8M0186416
	15.00"	8M0144111	8M0144112
	15.25"	8M0186419	8M0186418
30"	14.63"	8M0187107	8M0187106
	14.75"	8M0187109	8M0187108
	15.00"	8M0179843	8M0179844
	15.25"	8M0163751	8M0163752
31"	14.63"	8M0187113	8M0187112
	14.75"	8M0187115	8M0187114
	15.00"	8M0148847	8M0148848
	15.25"	8M0189619	8M0189618
32"	14.63"	8M0189617	8M0189616
	14.75"	8M0165313	8M0165314
	15.00"	8M0145081	8M0145082
	15.25"	8M0143703	8M0143702
33"	14.63"	8M0187143	8M0187142
	14.75"	8M0141471	8M0141472
	15.00"	8M0156781	8M0156780
	15.25"	8M0145071	8M0145072
34"	14.63"	8M0187163	8M0187162
	14.75"	8M0141473	8M0141474
	15.00"	8M0187165	8M0187164
	15.25"	8M0149445	8M0149444
35"	14.63"	8M0187169	8M0187168
	14.75"	8M0175765	8M0175764
	15.00"	8M0146583	8M0146584
	15.25"	8M0187187	8M0187186
36"	14.63"	8M0187191	8M0187190
	14.75"	8M0187193	8M0187192
	15.00"	8M0167837	8M0167838
	15.25"	8M0187195	8M0187194
37"	14.63"	8M0187341	8M0187340
	14.75"	8M0176005	8M0176006
	15.00"	8M0187343	8M0187342
	15.25"	8M0173179	8M0173180

400HP OUTBOARD CLEAVER 15° RAKE

PITCH	DIAMETER	LH	RH
26"	14.63"	8M0186215	8M0186214
	14.75"	8M0186217	8M0186216
	15.00"	8M0186219	8M0186218
	15.25"	8M0186221	8M0186220
27"	14.63"	8M0186239	8M0186238
	14.75"	8M0186241	8M0186240
	15.00"	8M0186243	8M0186242
	15.25"	8M0186281	8M0186280
28"	14.63"	8M0186291	8M0186290
	14.75"	8M0156783	8M0156784
	15.00"	8M0169475	8M0169474
	15.25"	8M0186363	8M0186362
29"	14.63"	8M0186369	8M0186368
	14.75"	8M0186371	8M0186370
	15.00"	8M0186373	8M0186372
	15.25"	8M0145701	8M0145700
30"	14.63"	8M0186421	8M0186420
	14.75"	8M0186423	8M0186422
	15.00"	8M0152315	8M0152316
	15.25"	8M0151077	8M0151078
31"	14.63"	8M0187111	8M0187110
	14.75"	8M0183477	8M0183478
	15.00"	8M0153317	8M0153316
	15.25"	8M0145699	8M0145698
32"	14.63"	8M0187135	8M0187134
	14.75"	8M0187137	8M0187136
	15.00"	8M0140855	8M0140854
	15.25"	8M0147733	8M0147732
33"	14.63"	8M0187141	8M0187140
	14.75"	8M0136309	8M0136308
	15.00"	8M0140247	8M0140248
	15.25"	8M0148161	8M0148162
34"	14.63"	8M0187161	8M0187160
	14.75"	8M0181201	8M0181200
	15.00"	8M0139055	8M0139056
	15.25"	8M0148163	8M0148164
35"	14.63"	8M0187167	8M0187166
	14.75"	8M0164147	8M0164146
	15.00"	8M0139763	8M0139764
	15.25"	8M0148291	8M0148290
36"	14.63"	8M0187189	8M0187188
	14.75"	8M0166025	8M0166026
	15.00"	8M0148311	8M0148310
	15.25"	8M0127245	8M0127244
37"	14.63"	8M0187197	8M0187196
	14.75"	8M0167787	8M0167788
	15.00"	8M0168393	8M0168392
	15.25"	8M0187339	8M0187338

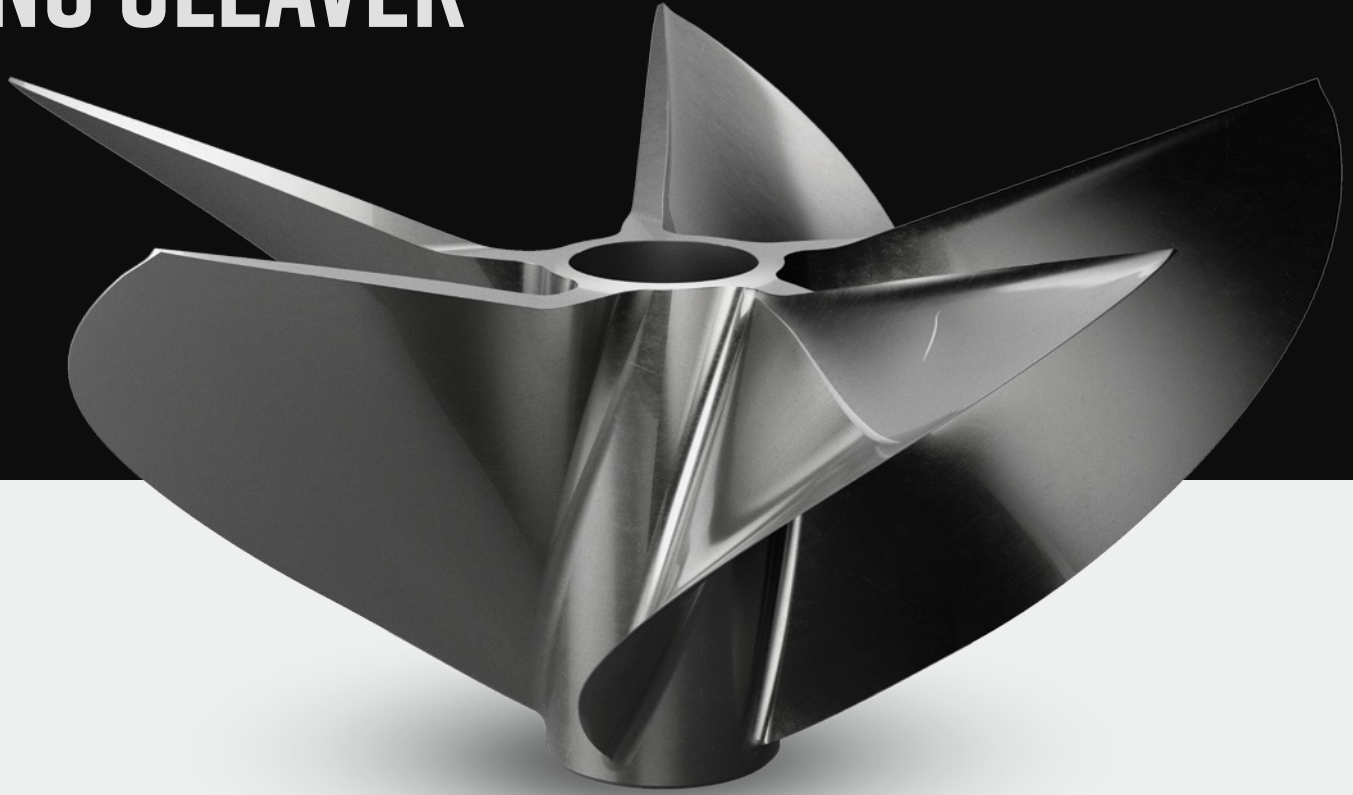
400HP OUTBOARD CLEAVER 15° RAKE

PITCH	DIAMETER	LH	RH
38"	14.63"	8M0187345	8M0187344
	14.75"	8M0165499	8M0165498
	15.00"	8M0187347	8M0187346
	15.25"	8M0187411	8M0187410
39"	14.63"	8M0187413	8M0187412
	14.75"	8M0187415	8M0187414
	15.00"	8M0187417	8M0187416
	15.25"	8M0187419	8M0187418
40"	14.63"	8M0187421	8M0187420
	14.75"	8M0187509	8M0187508
	15.00"	8M0187511	8M0187510
	15.25"	8M0187513	8M0187512

OUTBOARD | 500HP

PRECISION SERIES

CNC CLEAVER[®]



The Mercury Racing 500HP 5-blade Mercury Racing CNC Outboard Cleaver propellers are recommended for use with the Mercury Racing 450R outboard fitted with the surface-piercing Sport Master gearcase. The precision-machined props are designed to maximize boat performance and handling in a variety of 450R Sport Master applications. Mercury Racing's proprietary 5-axis CNC production process yields the most consistent, durable, and advanced propellers we have ever produced.

Outboard Cleaver propellers are available with pitch ranges of 26 to 40 inch, 14.63 to 15.25 inch diameter, and 15 or 18 degree rake.

500HP OUTBOARD CLEAVER 18° RAKE

PITCH	DIAMETER	LH	RH
26"	14.63"	8M0189543	8M0189542
	14.75"	8M0159955	8M0159956
	15.00"	8M0154969	8M0154970
	15.25"	8M0160051	8M0160052
27"	14.63"	8M0189547	8M0189546
	14.75"	8M0160105	8M0160106
	15.00"	8M0160111	8M0160112
	15.25"	8M0160113	8M0160114
28"	14.63"	8M0189551	8M0189550
	14.75"	8M0160483	8M0160484
	15.00"	8M0160485	8M0160486
	15.25"	8M0160487	8M0160488
29"	14.63"	8M0189555	8M0189554
	14.75"	8M0160581	8M0160582
	15.00"	8M0160583	8M0160584
	15.25"	8M0160585	8M0160586
30"	14.63"	8M0189559	8M0189558
	14.75"	8M0160653	8M0160652
	15.00"	8M0160655	8M0160654
	15.25"	8M0160657	8M0160656
31"	14.63"	8M0189563	8M0189562
	14.75"	8M0160737	8M0160738
	15.00"	8M0160739	8M0160740
	15.25"	8M0160741	8M0160742
32"	14.63"	8M0189567	8M0189566
	14.75"	8M0160803	8M0160804
	15.00"	8M0160805	8M0160806
	15.25"	8M0160807	8M0160808
33"	14.63"	8M0189571	8M0189570
	14.75"	8M0160853	8M0160852
	15.00"	8M0159339	8M0159338
	15.25"	8M0160855	8M0160854
34"	14.63"	8M0189575	8M0189574
	14.75"	8M0160835	8M0160834
	15.00"	8M0159341	8M0159340
	15.25"	8M0160837	8M0160836
35"	14.63"	8M0189579	8M0189578
	14.75"	8M0160829	8M0160828
	15.00"	8M0160831	8M0160830
	15.25"	8M0160833	8M0160832
36"	14.63"	8M0189583	8M0189582
	14.75"	8M0159975	8M0159974
	15.00"	8M0159977	8M0159976
	15.25"	8M0159979	8M0159978
37"	14.63"	8M0176384	8M0176384
	14.75"	8M0160041	8M0160042
	15.00"	8M0160043	8M0160044
	15.25"	8M0160045	8M0160046

500HP OUTBOARD CLEAVER 15° RAKE

PITCH	DIAMETER	LH	RH
26"	14.63"	8M0189541	8M0189540
	14.75"	8M0159883	8M0159882
	15.00"	8M0154967	8M0154968
	15.25"	8M0159953	8M0159954
27"	14.63"	8M0189545	8M0189544
	14.75"	8M0160053	8M0160054
	15.00"	8M0160055	8M0160056
	15.25"	8M0160057	8M0160058
28"	14.63"	8M0189549	8M0189548
	14.75"	8M0160127	8M0160128
	15.00"	8M0160129	8M0160130
	15.25"	8M0160131	8M0160132
29"	14.63"	8M0189553	8M0189552
	14.75"	8M0160539	8M0160538
	15.00"	8M0160541	8M0160540
	15.25"	8M0160543	8M0160542
30"	14.63"	8M0189557	8M0189556
	14.75"	8M0160589	8M0160590
	15.00"	8M0160591	8M0160592
	15.25"	8M0160593	8M0160594
31"	14.63"	8M0189561	8M0189560
	14.75"	8M0160659	8M0160660
	15.00"	8M0155583	8M0155582
	15.25"	8M0160661	8M0160662
32"	14.63"	8M0189565	8M0189564
	14.75"	8M0160751	8M0160752
	15.00"	8M0155573	8M0155574
	15.25"	8M0160121	8M0160120
33"	14.63"	8M0189569	8M0189568
	14.75"	8M0160851	8M0160850
	15.00"	8M0155575	8M0155576
	15.25"	8M0160123	8M0160122
34"	14.63"	8M0189573	8M0189572
	14.75"	8M0160857	8M0160856
	15.00"	8M0160859	8M0160858
	15.25"	8M0160861	8M0160860
35"	14.63"	8M0189577	8M0189576
	14.75"	8M0155383	8M0155384
	15.00"	8M0156787	8M0156788
	15.25"	8M0160827	8M0160826
36"	14.63"	8M0189581	8M0189580
	14.75"	8M0155385	8M0155386
	15.00"	8M0159893	8M0159892
	15.25"	8M0159973	8M0159972
37"	14.63"	8M0189585	8M0189584
	14.75"	8M0157711	8M0157712
	15.00"	8M0160037	8M0160038
	15.25"	8M0160039	8M0160040

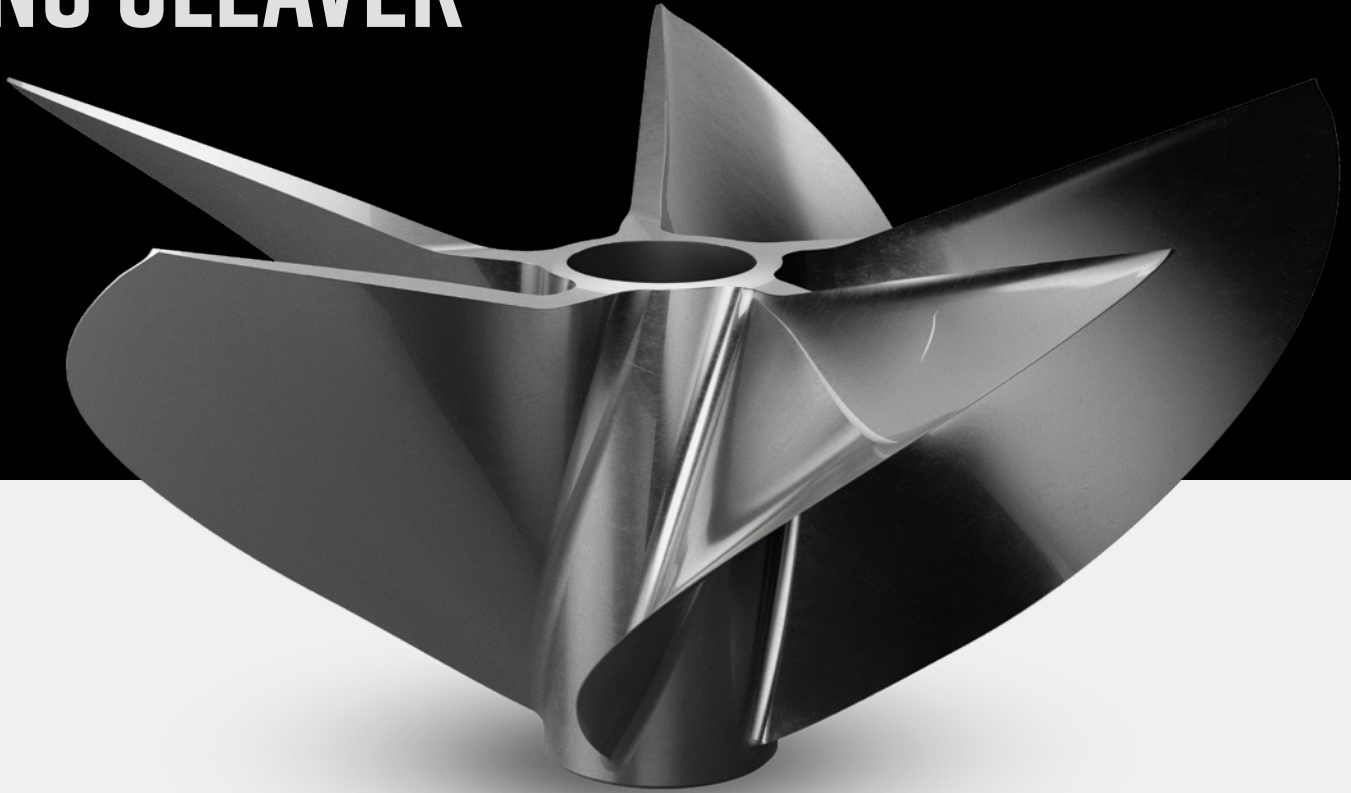
500HP OUTBOARD CLEAVER 15° RAKE

PITCH	DIAMETER	LH	RH
38"	14.63"	8M0161383	8M0161384
	14.75"	8M0163489	8M0163488
	15.00"	8M0163491	8M0163490
	15.25"	8M0163493	8M0163492
39"	14.63"	8M0189587	8M0189586
	14.75"	8M0163513	8M0163514
	15.00"	8M0163515	8M0163516
	15.25"	8M0163517	8M0163518
40"	14.63"	8M0189589	8M0189588
	14.75"	8M0163521	8M0163522
	15.00"	8M0163523	8M0163524
	15.25"	8M0163525	8M0163526

OUTBOARD | 500HP

PRECISION SERIES

CNC CLEAVER[®]



The Mercury Racing 500HP 5-blade CNC Outboard Cleaver propellers are recommended for use with the R-Series 500R outboard fitted with the surface-piercing R-Drive Sport gearcase. Both the gearcase and these props specifically feature a 1.50-inch prop shaft.

The precision-machined props are designed to maximize boat performance and handling in a variety of 500R R-Drive Sport applications. The proprietary five-axis CNC production process yields the most consistent, durable, and advanced propellers Mercury Racing has ever produced.

Outboard Cleaver propellers are available with pitch ranges of 26 to 40 inch, 14.75 to 15.63 inch diameter, and 15- or 18-degree rake.

500-B OUTBOARD CLEAVER 18° RAKE

PITCH	DIAMETER	LH	RH
26"	14.75"	8M0211333	8M0211332
	15.00"	8M0211335	8M0211334
	15.25"	8M0211337	8M0211336
	15.50"	8M0215703	8M0215702
	15.63"	8M0211331	8M0211330
27"	14.75"	8M0211349	8M0211348
	15.00"	8M0211350	8M0211350
	15.25"	8M0211353	8M0211352
	15.50"	8M0215707	8M0215706
	15.63"	8M0211347	8M0211346
28"	14.75"	8M0211365	8M0211364
	15.00"	8M0211367	8M0211366
	15.25"	8M0211369	8M0211368
	15.50"	8M0215711	8M0215710
	15.63"	8M0211363	8M0211362
29"	14.75"	8M0211381	8M0211380
	15.00"	8M0211383	8M0211382
	15.25"	8M0211385	8M0211384
	15.50"	8M0215715	8M0215714
	15.63"	8M0211379	8M0211378
30"	14.75"	8M0211397	8M0211396
	15.00"	8M0211399	8M0211398
	15.25"	8M0211401	8M0211400
	15.50"	8M0215719	8M0215718
	15.63"	8M0211395	8M0211394
31"	14.75"	8M0211413	8M0211412
	15.00"	8M0211415	8M0211414
	15.25"	8M0211417	8M0211416
	15.50"	8M0215723	8M0215722
	15.63"	8M0211411	8M0211410
32"	14.75"	8M0211429	8M0211428
	15.00"	8M0211431	8M0211430
	15.25"	8M0211433	8M0211432
	15.50"	8M0215727	8M0215726
	15.63"	8M0211427	8M0211426
33"	14.75"	8M0211445	8M0211444
	15.00"	8M0211447	8M0211446
	15.25"	8M0211449	8M0211448
	15.50"	8M0215731	8M0215730
	15.63"	8M0211443	8M0211442
34"	14.75"	8M0211461	8M0211460
	15.00"	8M0211463	8M0211462
	15.25"	8M0211465	8M0211464
	15.50"	8M0215735	8M0215734
	15.63"	8M0211459	8M0211458
35"	14.75"	8M0211477	8M0211476
	15.00"	8M0211479	8M0211478
	15.25"	8M0211481	8M0211480
	15.50"	8M0215739	8M0215738
	15.63"	8M0211475	8M0211474
36"	14.75"	8M0211493	8M0211492
	15.00"	8M0211495	8M0211494
	15.25"	8M0211497	8M0211496
	15.50"	8M0215743	8M0215742
	15.63"	8M0211491	8M0211490
37"	14.75"	8M0211509	8M0211508
	15.00"	8M0211511	8M0211510
	15.25"	8M0211513	8M0211512
	15.50"	8M0215747	8M0215746
	15.63"	8M0211507	8M0211506

500-B OUTBOARD CLEAVER 15° RAKE

PITCH	DIAMETER	LH	RH
26"	14.75"	8M0211325	8M0211324
	15.00"	8M0211327	8M0211326
	15.25"	8M0211329	8M0211328
	15.50"	8M0215701	8M0215700
	15.63"	8M0211323	8M0211558
27"	14.75"	8M0211341	8M0211340
	15.00"	8M0211343	8M0211342
	15.25"	8M0211345	8M0211344
	15.50"	8M0215705	8M0215704
	15.63"	8M0211339	8M0211338
28"	14.75"	8M0211357	8M0211356
	15.00"	8M0211359	8M0211358
	15.25"	8M0211361	8M0211360
	15.50"	8M0215709	8M0215708
	15.63"	8M0211355	8M0211354
29"	14.75"	8M0211373	8M0211372
	15.00"	8M0211375	8M0211374
	15.25"	8M0211377	8M0211376
	15.50"	8M0215713	8M0215712
	15.63"	8M0211371	8M0211370
30"	14.75"	8M0211389	8M0211388
	15.00"	8M0211391	8M0211390
	15.25"	8M0211393	8M0211392
	15.50"	8M0215717	8M0215716
	15.63"	8M0211387	8M0211386
31"	14.75"	8M0211405	8M0211404
	15.00"	8M0211407	8M0211406
	15.25"	8M0211409	8M0211408
	15.50"	8M0215721	8M0215720
	15.63"	8M0211403	8M0211402
32"	14.75"	8M0211421	8M0211420
	15.00"	8M0211423	8M0211422
	15.25"	8M0211425	8M0211424
	15.50"	8M0215725	8M0215724
	15.63"	8M0211419	8M0211418
33"	14.75"	8M0211437	8M0211436
	15.00"	8M0211439	8M0211438
	15.25"	8M0211441	8M0211440
	15.50"	8M0215729	8M0215728
	15.63"	8M0211435	8M0211434
34"	14.75"	8M0211453	8M0211452
	15.00"	8M0211455	8M0211454
	15.25"	8M0211457	8M0211456
	15.50"	8M0215733	8M0215732
	15.63"	8M0211451	8M0211450
35"	14.75"	8M0211469	8M0211468
	15.00"	8M0211471	8M0211470
	15.25"	8M0211473	8M0211472
	15.50"	8M0215737	8M0215736
	15.63"	8M0211467	8M0211466
36"	14.75"	8M0211485	8M0211484
	15.00"	8M0211487	8M0211486
	15.25"	8M0211489	8M0211488
	15.50"	8M0215741	8M0215740
	15.63"	8M0211483	8M0211482
37"	14.75"	8M0211501	8M0211500
	15.00"	8M0211503	8M0211502
	15.25"	8M0211505	8M0211504
	15.50"	8M0215745	8M0215744
	15.63"	8M0211499	8M0211498

500-B OUTBOARD CLEAVER 15° RAKE

PITCH	DIAMETER	LH	RH
38"	14.75"	8M0211517	8M0211516
	15.00"	8M0211519	8M0211518
	15.25"	8M0211521	8M0211520
	15.50"	8M0215755	8M0215754
	15.63"	8M0211515	8M0211514
39"	14.75"	8M0211525	8M0211524
	15.00"	8M0211527	8M0211526
	15.25"	8M0211529	8M0211528
	15.50"	8M0215749	8M0215748
	15.63"	8M0211523	8M0211522
40"	14.75"	8M0211533	8M0211532
	15.00"	8M0211535	8M0211534
	15.25"	8M0211537	8M0211536
	15.50"	8M0215751	8M0215750
	15.63"	8M0211531	8M0211530

These propellers feature a 1.5 inch broached spline and are only compatible with the 500R outboard model.

PROP SLIP CALCULATOR

The image shows a smartphone screen displaying the Mercury Racing Prop Slip Calculator app. At the top is the Mercury Racing logo. Below it are five input fields, each with a label and a right-pointing arrow. The labels are: 'PROPELLER PITCH', 'CALCULATE GEAR RATIO', 'CALCULATE ENGINE RPM', 'CALCULATE ACTUAL SPEED', and 'CALCULATE PROPELLER SLIP'. The 'CALCULATE PROPELLER SLIP' field is highlighted with an orange background and contains a '%' symbol. At the bottom of the screen, the text 'PROPELLER SLIP CALCULATOR' is displayed in a bold, sans-serif font.

IS IT IMPORTANT TO KNOW YOUR PROP'S SLIP?

Slip is the most misunderstood of all propeller terms, probably because it sounds like something undesirable. Slip is not a measure of propeller efficiency. Rather, slip is the difference between actual and theoretical travel resulting from a necessary propeller blade angle of attack. If the blade had no angle of attack, there would be no slip; but, of course, there would be no positive and negative pressure created on the blades and, therefore, there would be no thrust.

CNC PROP COVER

The CNC Prop Cover features the Mercury Racing word mark silk-screened on a heavy-duty nylon material. The tough nylon shell resists tearing and is made to protect your propeller investment. This cover is designed for use with 5-blade and 6-blade CNC Cleaver propellers.



CLEAVER PROPELLER CASE

The all-new Props Case features industry leading design and performance, just like the line of Mercury Racing propellers. The Props Case will ship standard with all new Precision Series CNC Cleaver propellers and is also available for purchase as a standalone. The Props Case has two different internal fixtures: one for M6 and M8 Drive Cleavers and one for Outboard Cleavers, including any other Flo-Torq hub-equipped propeller line.

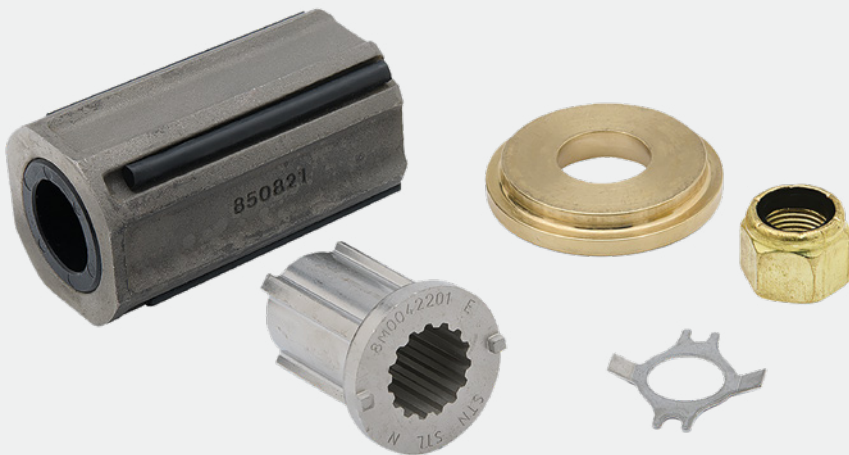
RACING PROPELLER HUB KITS

835258K 1

The 835258K 1 is the solid steel hub kit designed for 1.00" prop shafts and for over-hub style propellers equipped with Flo Torq hubs such as the Lightning E.T. and legacy propeller lines including the Pro E.T., Chopper II, and Cleaver.

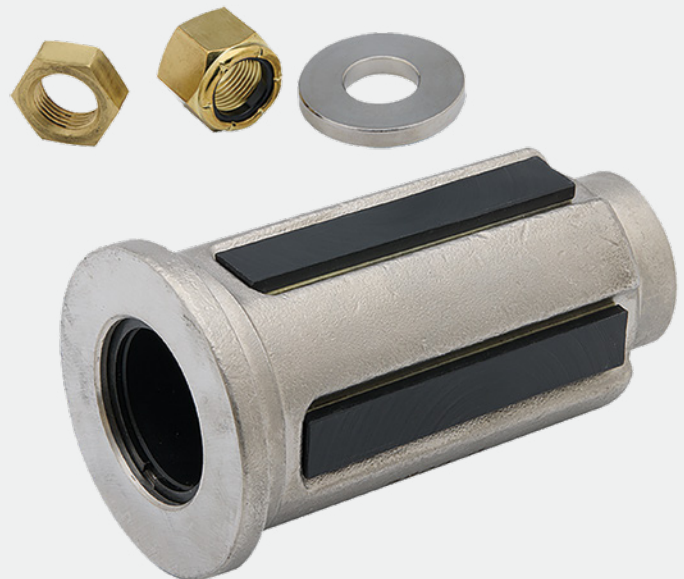
835258K 2

The 835258K 2 is the solid steel hub kit designed for 1.00" prop shafts and for thru-hub style propellers equipped with Flo Torq hubs such as the Bravo I, Tempest Plus, Fury, Pro Max, etc. The bushing in this hub is slightly shorter compared to the 835258K 1 to allow for proper contact with the trust washer.



8M0183487

The 8M0183487 is the solid steel hub kit designed for 1.25" prop shafts for all Flo Torq hub equipped propeller lines. This hub kit features a jam nut in addition to the nylon lock nut to increase functional longevity in demanding applications.





8M0217764

The 8M0217764 also known as Ultralock, is the solid steel hub kit designed for the 1.50" prop shaft featured on all 500R outboards, and is used to adapt propeller families with Flo Torq hubs such as the Ventura and MAX5. This hub kit contains the same jam nut and lock nut components of the 8M0183487 hub kit and also a labyrinth seal ring that slides onto the front of the propeller and is required when mating to the larger 5.9" 500R gear cases.

8M0179579

The 8M0179579 is the standalone jam nut, lock nut, and washer kit that can be used as replacement components alongside hub kits 8M0183487 and 8M0217764. It is also the required and complete hardware used for mounting any Outboard CNC Cleaver to 1.25" or 1.50" prop shafts.



